

Used machines offer

Tarron MS 80.2 K - Airport Snow Plough

Offer number: UM0011483

 **aebi schmidt**
group

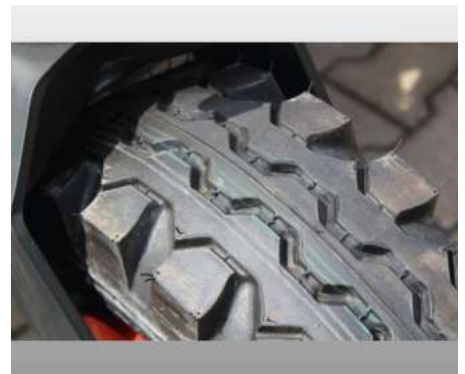


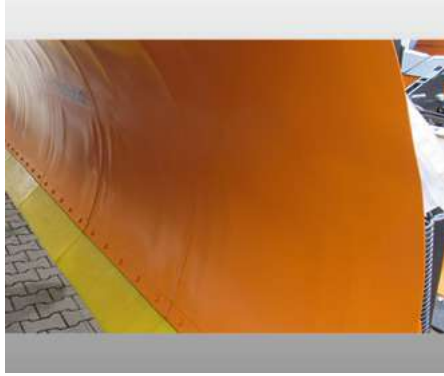
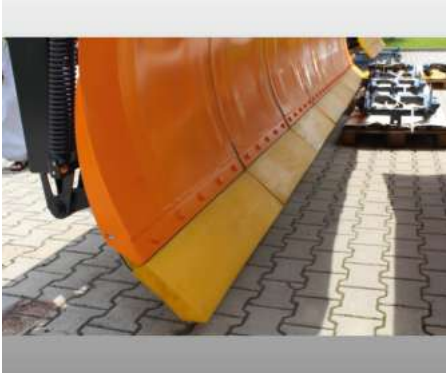
Brand: Schmitd
Mat.-Nr.: 1305294-7
Year of manufacture: 04/2021
Serialnumber: 75-1-001
Running hours: 10 h
Condition: Class 4
Location: Poland
25-650 Kielce

Price: **On request**

The offered airport snow plough used as a demo machine and will be in nearly new condition. Multi blade snow plough with individual blade suspension.

Gallery





Technical data
 Airport ploughs Tarron MS 72.1 & MS 80.1

Dimensions (mm) and weights (kg)	MS72.1	MS72.1 N	MS72.1 K	MS72.1 NK	MS80.1	MS80.1 K
H1 Plough height, middle sections	1.420	1.200	1.420	1.200	1.400	1.400
H2 Plough height, left and right side (incl. snow deflector plastic)	1.550	1.320	1.550	1.320	1.530	1.530
L1	1.350	1.340	1.300	1.340	1.300	1.300
L5 Length on cutting edge	7.200	7.200	7.200	7.200	8.000	8.000
L6 at α=12° working width approx.	6.100	6.100	6.100	6.100	6.700	6.700
L10 at α=12° passage width approx.	6.340	6.310	6.340	6.310	7.020	7.020
L11 in straight direction, folded in, passage width approx.	—	—	4.500	4.500	—	4.800
L17 at α=12° L3	2.420	2.040	2.420	2.040	2.900	2.900
L20 Distance of center of gravity to coupling level according to DIN 30522.3	1.160	1.120	1.160	1.150	900	900
Weight with PUR cutting edges approx.	2.150	2.030	2.400	2.290	2.550	2.850
Weight with all options, approx.	2.570	2.450	2.820	2.710	2.950	3.150
Number of blade segments	9	9	9	9	9	9

Equipment

Basic Data

Model	Tarron MS 82.2 K
Type	Airport snow plough
Frame	Parallel lifting device
Blade	Width 8`000 mm
Cutting	Edge Cutting edge material made out of PUR
Support	Support via wheels
Connection	Adapter for din front mounting plate size 5
Options	Elasto snow cover, LED warning lamps on LH and RH side
Weight	2`185 kg

Contact

Artur Maciejewski
 Used Machines Sales Manager
 Mobile: +48600397036
 Phone: +48 32 889 02 91
 E-Mail: artur.maciejewski@aebi-schmidt.com



www.aebi-schmidt.com
 © Aebi Schmidt Group | Aebi Schmidt Holding AG | CH-8050 Zurich



Document created on 08.03.2023

All rights reserved. Technical data is subject to change. Illustrations are not binding. Errors and amendments excepted.